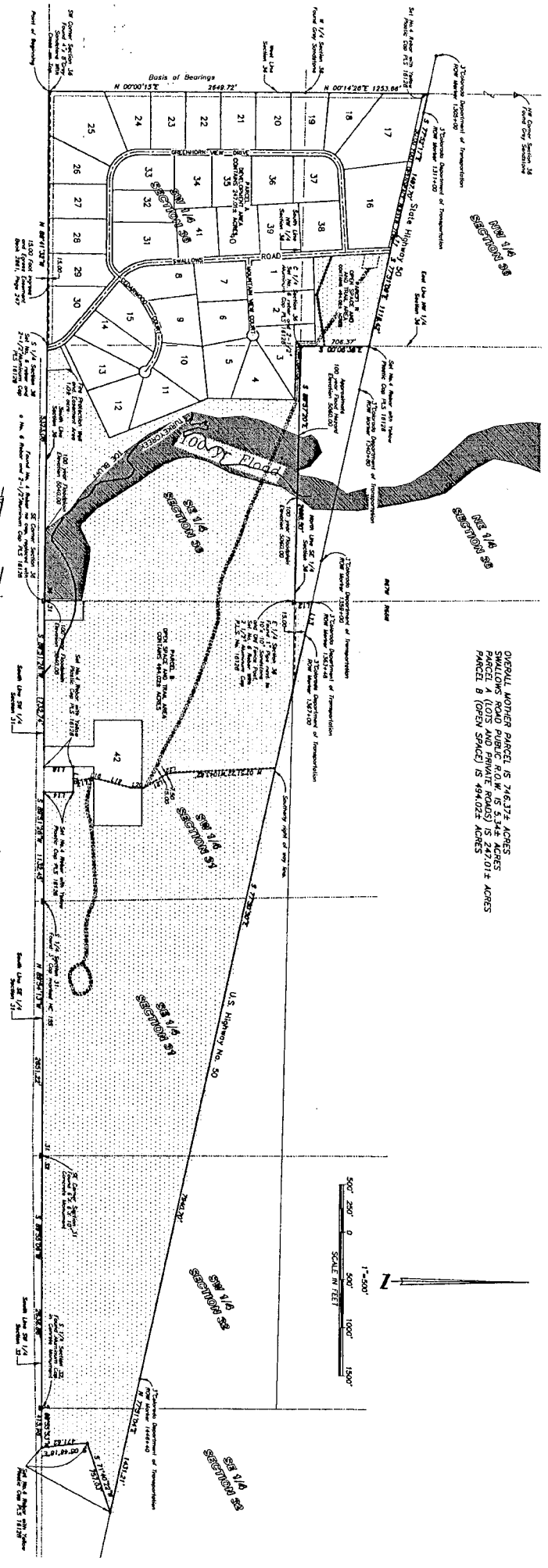


Mountain View Estates

A Rural Land Use Plan

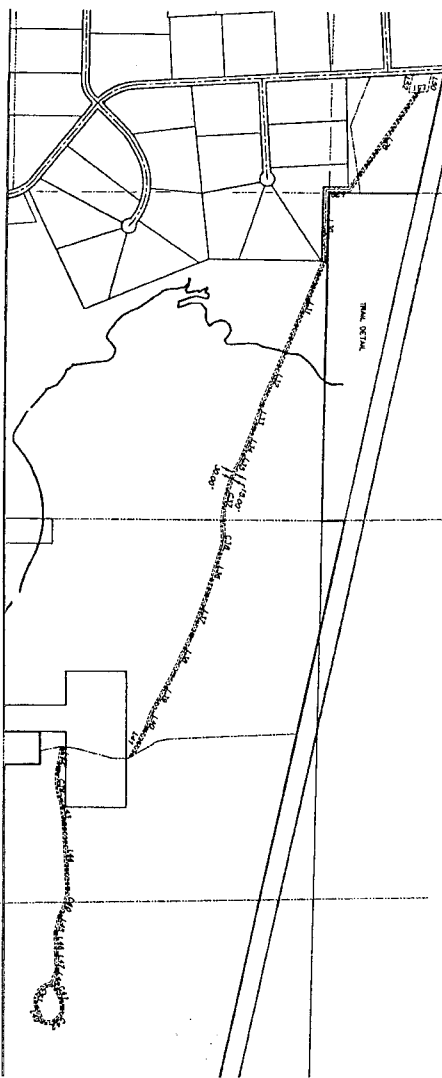
A Subdivision Exemption Pursuant to Colorado Revised Statutes 38-28-101(10)(c)(X) Cluster Development
 A parcel of land being the S 1/2 and a portion of the NW 1/4 of Section 36, Township 19 South, Range 67 West of the Sixth Principal Meridian,
 and portions of the SW 1/4 of the NW 1/4, and SE 1/4 of Section 31, and portions of the SW 1/4, and SE 1/4 of Section 32,
 Township 19 South, Range 66 West of the Sixth Principal Meridian, Pueblo County, Colorado.
 (SUBDIVISION BOUNDARY AND SURVEY MONUMENT DETAIL)

M-157
 2/13



CHAIN	LENGTH	BEARING	AREA
C1	317.14	S 60° 20' 00" W	20,214
C2	317.14	S 60° 20' 00" W	20,214
C3	317.14	S 60° 20' 00" W	20,214
C4	317.14	S 60° 20' 00" W	20,214
C5	317.14	S 60° 20' 00" W	20,214
C6	317.14	S 60° 20' 00" W	20,214
C7	317.14	S 60° 20' 00" W	20,214
C8	317.14	S 60° 20' 00" W	20,214
C9	317.14	S 60° 20' 00" W	20,214
C10	317.14	S 60° 20' 00" W	20,214
C11	317.14	S 60° 20' 00" W	20,214
C12	317.14	S 60° 20' 00" W	20,214
C13	317.14	S 60° 20' 00" W	20,214
C14	317.14	S 60° 20' 00" W	20,214
C15	317.14	S 60° 20' 00" W	20,214
C16	317.14	S 60° 20' 00" W	20,214
C17	317.14	S 60° 20' 00" W	20,214
C18	317.14	S 60° 20' 00" W	20,214
C19	317.14	S 60° 20' 00" W	20,214
C20	317.14	S 60° 20' 00" W	20,214
C21	317.14	S 60° 20' 00" W	20,214
C22	317.14	S 60° 20' 00" W	20,214
C23	317.14	S 60° 20' 00" W	20,214
C24	317.14	S 60° 20' 00" W	20,214
C25	317.14	S 60° 20' 00" W	20,214
C26	317.14	S 60° 20' 00" W	20,214
C27	317.14	S 60° 20' 00" W	20,214
C28	317.14	S 60° 20' 00" W	20,214
C29	317.14	S 60° 20' 00" W	20,214
C30	317.14	S 60° 20' 00" W	20,214
C31	317.14	S 60° 20' 00" W	20,214
C32	317.14	S 60° 20' 00" W	20,214
C33	317.14	S 60° 20' 00" W	20,214
C34	317.14	S 60° 20' 00" W	20,214
C35	317.14	S 60° 20' 00" W	20,214
C36	317.14	S 60° 20' 00" W	20,214
C37	317.14	S 60° 20' 00" W	20,214
C38	317.14	S 60° 20' 00" W	20,214
C39	317.14	S 60° 20' 00" W	20,214
C40	317.14	S 60° 20' 00" W	20,214
C41	317.14	S 60° 20' 00" W	20,214
C42	317.14	S 60° 20' 00" W	20,214

LINE	LENGTH	BEARING
L1	317.14	S 60° 20' 00" W
L2	317.14	S 60° 20' 00" W
L3	317.14	S 60° 20' 00" W
L4	317.14	S 60° 20' 00" W
L5	317.14	S 60° 20' 00" W
L6	317.14	S 60° 20' 00" W
L7	317.14	S 60° 20' 00" W
L8	317.14	S 60° 20' 00" W
L9	317.14	S 60° 20' 00" W
L10	317.14	S 60° 20' 00" W
L11	317.14	S 60° 20' 00" W
L12	317.14	S 60° 20' 00" W
L13	317.14	S 60° 20' 00" W
L14	317.14	S 60° 20' 00" W
L15	317.14	S 60° 20' 00" W
L16	317.14	S 60° 20' 00" W
L17	317.14	S 60° 20' 00" W
L18	317.14	S 60° 20' 00" W
L19	317.14	S 60° 20' 00" W
L20	317.14	S 60° 20' 00" W
L21	317.14	S 60° 20' 00" W
L22	317.14	S 60° 20' 00" W
L23	317.14	S 60° 20' 00" W
L24	317.14	S 60° 20' 00" W
L25	317.14	S 60° 20' 00" W
L26	317.14	S 60° 20' 00" W
L27	317.14	S 60° 20' 00" W
L28	317.14	S 60° 20' 00" W
L29	317.14	S 60° 20' 00" W
L30	317.14	S 60° 20' 00" W
L31	317.14	S 60° 20' 00" W
L32	317.14	S 60° 20' 00" W
L33	317.14	S 60° 20' 00" W
L34	317.14	S 60° 20' 00" W
L35	317.14	S 60° 20' 00" W
L36	317.14	S 60° 20' 00" W
L37	317.14	S 60° 20' 00" W
L38	317.14	S 60° 20' 00" W
L39	317.14	S 60° 20' 00" W
L40	317.14	S 60° 20' 00" W
L41	317.14	S 60° 20' 00" W
L42	317.14	S 60° 20' 00" W

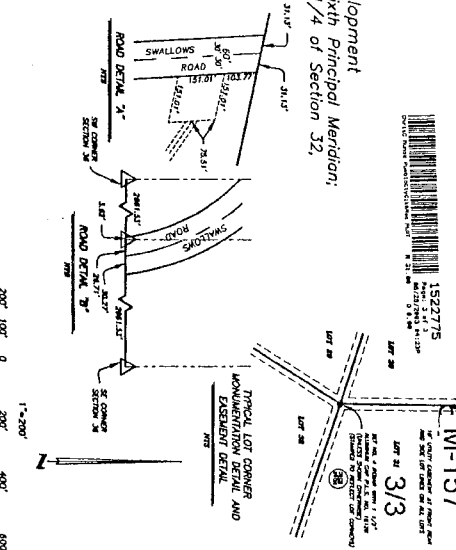
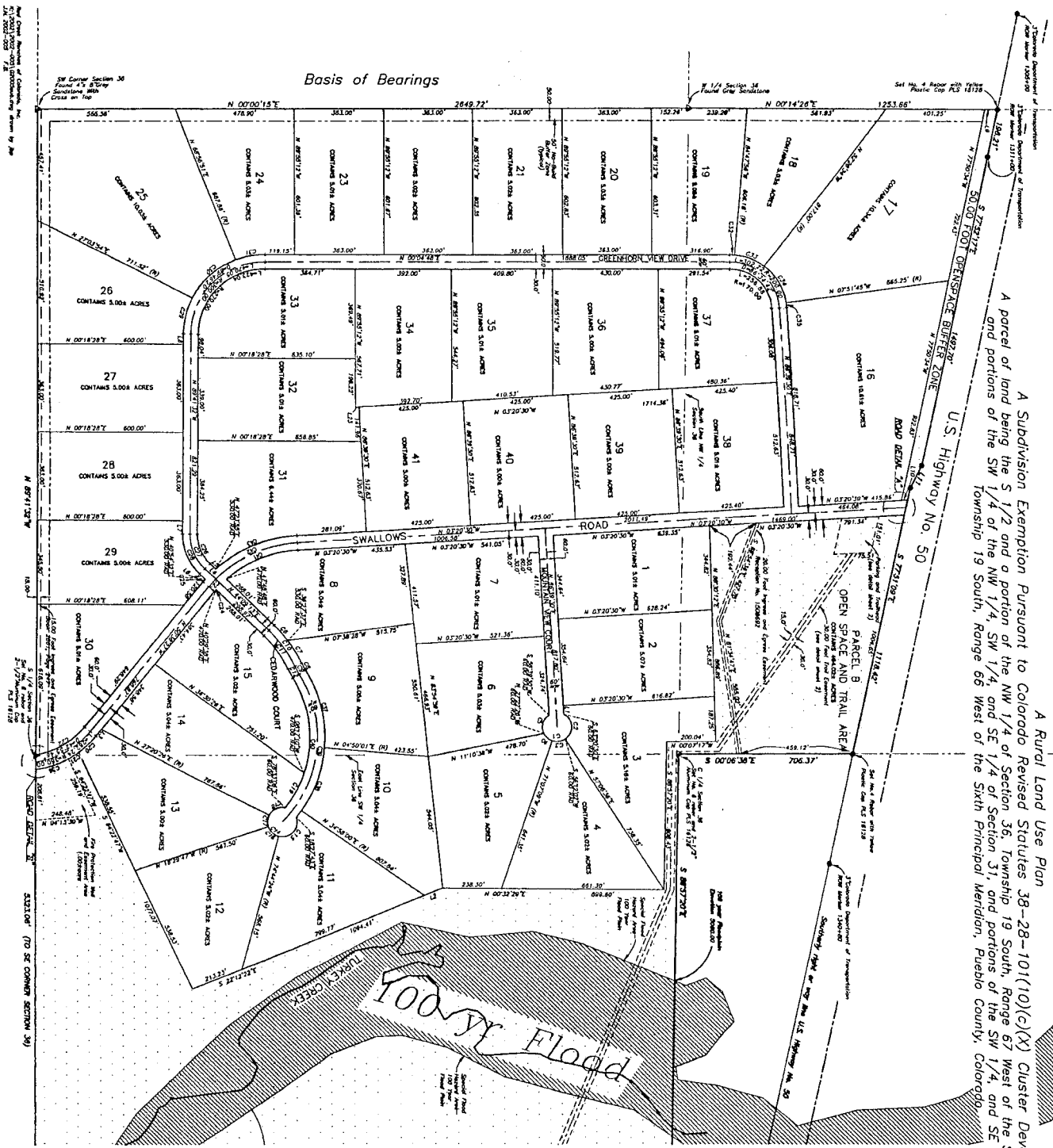


LINE	LENGTH	BEARING	AREA
L1	317.14	S 60° 20' 00" W	20,214
L2	317.14	S 60° 20' 00" W	20,214
L3	317.14	S 60° 20' 00" W	20,214
L4	317.14	S 60° 20' 00" W	20,214
L5	317.14	S 60° 20' 00" W	20,214
L6	317.14	S 60° 20' 00" W	20,214
L7	317.14	S 60° 20' 00" W	20,214
L8	317.14	S 60° 20' 00" W	20,214
L9	317.14	S 60° 20' 00" W	20,214
L10	317.14	S 60° 20' 00" W	20,214
L11	317.14	S 60° 20' 00" W	20,214
L12	317.14	S 60° 20' 00" W	20,214
L13	317.14	S 60° 20' 00" W	20,214
L14	317.14	S 60° 20' 00" W	20,214
L15	317.14	S 60° 20' 00" W	20,214
L16	317.14	S 60° 20' 00" W	20,214
L17	317.14	S 60° 20' 00" W	20,214
L18	317.14	S 60° 20' 00" W	20,214
L19	317.14	S 60° 20' 00" W	20,214
L20	317.14	S 60° 20' 00" W	20,214
L21	317.14	S 60° 20' 00" W	20,214
L22	317.14	S 60° 20' 00" W	20,214
L23	317.14	S 60° 20' 00" W	20,214
L24	317.14	S 60° 20' 00" W	20,214
L25	317.14	S 60° 20' 00" W	20,214
L26	317.14	S 60° 20' 00" W	20,214
L27	317.14	S 60° 20' 00" W	20,214
L28	317.14	S 60° 20' 00" W	20,214
L29	317.14	S 60° 20' 00" W	20,214
L30	317.14	S 60° 20' 00" W	20,214
L31	317.14	S 60° 20' 00" W	20,214
L32	317.14	S 60° 20' 00" W	20,214
L33	317.14	S 60° 20' 00" W	20,214
L34	317.14	S 60° 20' 00" W	20,214
L35	317.14	S 60° 20' 00" W	20,214
L36	317.14	S 60° 20' 00" W	20,214
L37	317.14	S 60° 20' 00" W	20,214
L38	317.14	S 60° 20' 00" W	20,214
L39	317.14	S 60° 20' 00" W	20,214
L40	317.14	S 60° 20' 00" W	20,214
L41	317.14	S 60° 20' 00" W	20,214
L42	317.14	S 60° 20' 00" W	20,214

Mountain View Estates

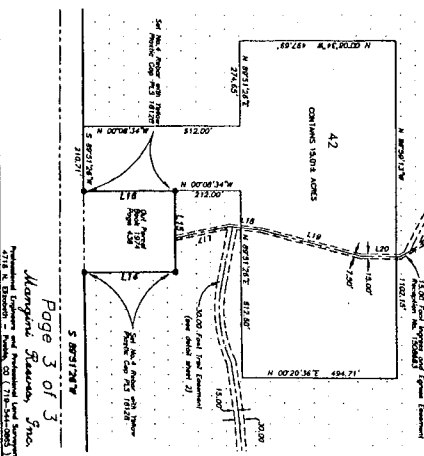
A Rural Land Use Plan

A Subdivision Exemption Pursuant to Colorado Revised Statutes 38-28-101(10)(c)(X) Cluster Development
 A parcel of land being the S 1/2 and a portion of the NW 1/4 of Section 36, Township 19 South, Range 67 West of the Sixth Principal Meridian,
 and portions of the SW 1/4, NW 1/4, SW 1/4, and SE 1/4 of Section 31, and portions of the SW 1/4, and SE 1/4 of Section 32,
 Township 19 South, Range 66 West of the Sixth Principal Meridian, Pueblo County, Colorado.



LINE	LENGTH	BEARING
C1	21.8	N 89°12'12" W
C2	60.0	N 89°12'12" W
C3	60.0	N 89°12'12" W
C4	60.0	N 89°12'12" W
C5	60.0	N 89°12'12" W
C6	60.0	N 89°12'12" W
C7	60.0	N 89°12'12" W
C8	60.0	N 89°12'12" W
C9	60.0	N 89°12'12" W
C10	60.0	N 89°12'12" W
C11	60.0	N 89°12'12" W
C12	60.0	N 89°12'12" W
C13	60.0	N 89°12'12" W
C14	60.0	N 89°12'12" W
C15	60.0	N 89°12'12" W
C16	60.0	N 89°12'12" W
C17	60.0	N 89°12'12" W
C18	60.0	N 89°12'12" W
C19	60.0	N 89°12'12" W
C20	60.0	N 89°12'12" W
C21	60.0	N 89°12'12" W
C22	60.0	N 89°12'12" W
C23	60.0	N 89°12'12" W
C24	60.0	N 89°12'12" W
C25	60.0	N 89°12'12" W
C26	60.0	N 89°12'12" W
C27	60.0	N 89°12'12" W
C28	60.0	N 89°12'12" W
C29	60.0	N 89°12'12" W
C30	60.0	N 89°12'12" W
C31	60.0	N 89°12'12" W
C32	60.0	N 89°12'12" W
C33	60.0	N 89°12'12" W
C34	60.0	N 89°12'12" W
C35	60.0	N 89°12'12" W
C36	60.0	N 89°12'12" W
C37	60.0	N 89°12'12" W
C38	60.0	N 89°12'12" W
C39	60.0	N 89°12'12" W
C40	60.0	N 89°12'12" W
C41	60.0	N 89°12'12" W
C42	60.0	N 89°12'12" W

PARCEL A
 DEVELOPMENT AREA
 CONTAINS 247.012 ACRES



SKLD LG 172.20.43.93 PB M/157.003